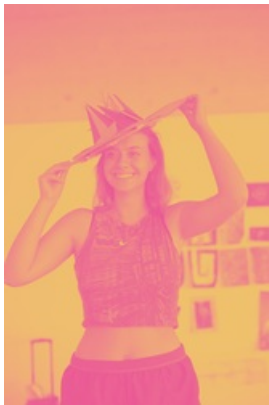


## Come study at ésadtpm

All roads lead to Toulon

---



Author: (c) esadtpm 2023

- > **The school welcomes students on mobility for studies or internships from the 2<sup>nd</sup> year under the Erasmus + programme or an international mobility outside of Erasmus+.**
- > **You can find all the information regarding your mobility at our school in our Fact Sheet (link on the side).**

## FORMALITIES

To be able to enroll at the Ecole Supérieure d'Art et Design Toulon Provence Méditerranée as a student, the original/home school must be in contact with the International Office to check if a bilateral agreement has been signed.

Afterwards, the coordinator has to nominate the student in question via mail to the International Office ([internationaloffice@esadtpm.fr](mailto:internationaloffice@esadtpm.fr)) before:

Ø June 1<sup>st</sup> for the Winter semester

Ø October 15<sup>th</sup> for the Spring Semester

After having received confirmation for the official nomination, students should then apply by filling in our [application form online](#) and by sending the required documents to the International Office until:

Ø June 15<sup>th</sup> for the Winter semester

Ø November 1<sup>st</sup> for the Spring Semester

After the reviewing of the applications, students will receive an acceptance letter (as well as a tripartite agreement for the outside Erasmus mobilities).

In order to create the Learning Agreement for Erasmus +, students might use the OLA platform – the Learning Agreement in paper is only accepted for students outside Erasmus +. To choose the courses, students have to follow the courses of the year and semester they enrolled in. Specifics for this can be found in the documents below "Course Catalogue". If you'd like to see detailed course descriptions, please consult our student handbook in the section "études - informations pratiques" in the french version of our website.

## ON SITE

Students must report their arrival by contacting the International Office on site, which will present them the school's premises. The academic monitoring will be provided by the coordinator teacher or the referent tutor.

During the exchange's time, students will be invited to follow a French language course (FLE).

## Online Application Form

▶ FILL OUT ONLINE 

## Fact Sheet



Mobilities informations

▼ **DOWNLOAD** (.PDF  
403KB)

## find out more

▶ Course Catalogue

## find out more

▶ Proficiency French Language

## find out more

▶ List of Required Documents

---

# ésadtpm

École Supérieure d'Art et de Design Toulon Provence Méditerranée

2 Parvis des écoles  
83000 Toulon

**04 94 05 58 05**

mél : [accueilba@metropoletpm.fr](mailto:accueilba@metropoletpm.fr)

<http://www.esadtpm.fr/en/international/come-study-at-esadtpm-331.html>